

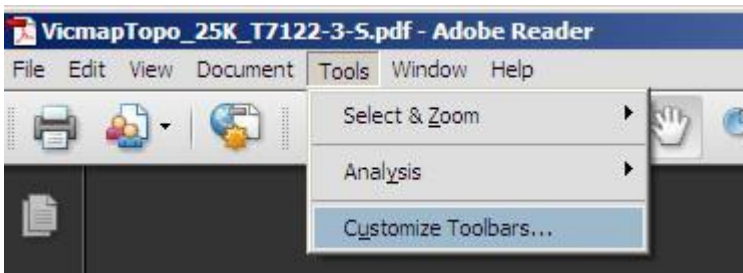
## Vicmap Topographic Georeferenced PDFs

Some editions of Vicmap Topographic maps are available as georeferenced PDF files. This allows the user to see coordinates as they move the cursor around the map. This capability will be added to future editions as they are created.

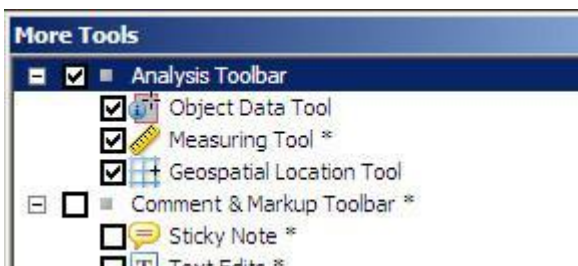
If a map is not georeferenced, the Location Tool will display its window, but no coordinates will be displayed.

### Enabling the toolbar – if you have started Acrobat Reader directly

Click on the Tools menu, and then Customize Toolbars



Make sure the Analysis Toolbar is ticked



This will display the new toolbar, which can then be dragged onto the main toolbar



### Enabling the toolbar – if you have opened Acrobat Reader inside a browser

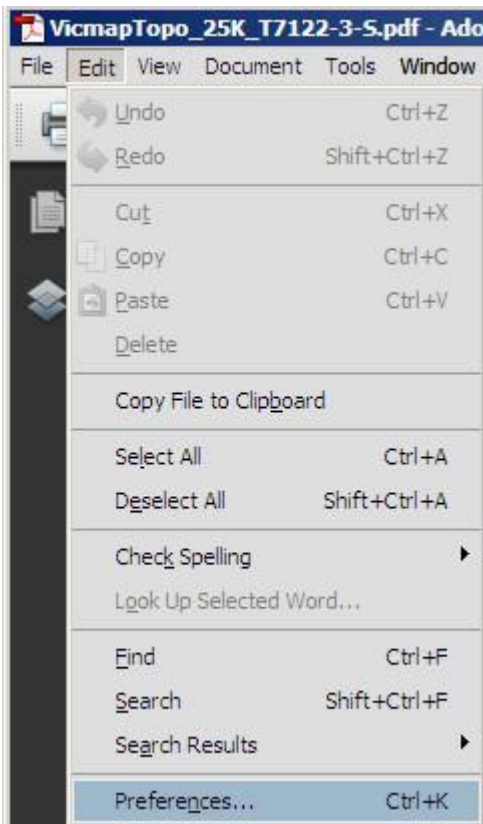
The Tools menu is for the browser, not Acrobat Reader, so right-click on an empty section of the toolbar - this displays a menu - click on Analysis to add the tool to the toolbar



## Setting the format for the coordinate display

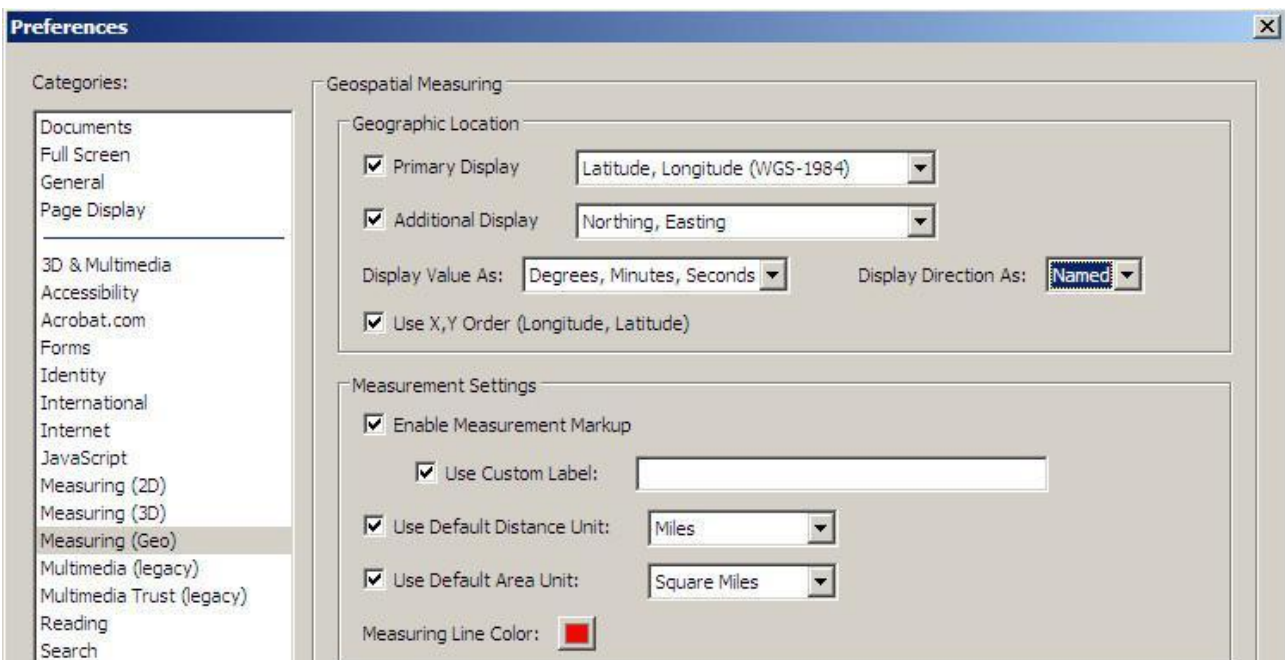
Note – this can only be done if you have opened Acrobat Reader directly

To set the format for the coordinate display, click on Edit and then Preferences



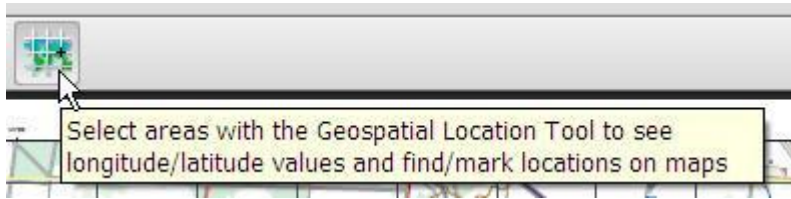
Select Measuring (Geo) and set the options to suit yourself

- the maps are GDA94 Latitude/Longitude which is identical to the WGS-1984 option

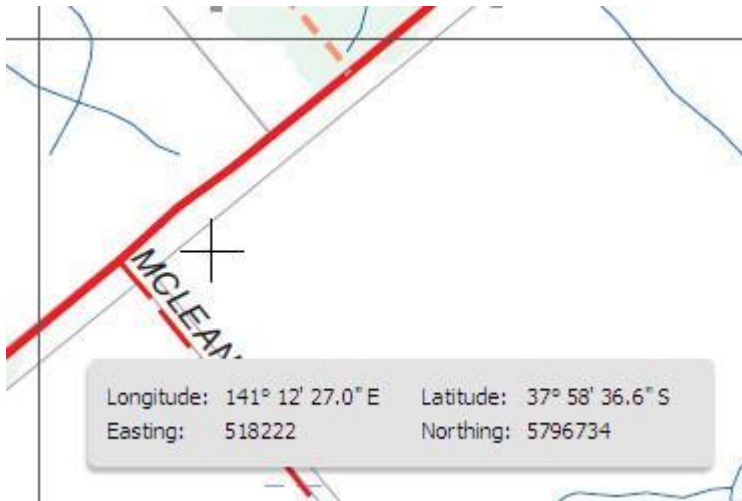


## Displaying coordinates

Click on the Geospatial Location Tool on the toolbar



The coordinates are displayed as you move the cursor around the map



It does not appear to be possible to change the location of this coordinate window.

The coordinate display will remain visible if you use the zoom and pan tools to move around the map. It will disappear if you select one of the other tools – such as Select