

VICMAP TOPOGRAPHIC MAPPING

Newsletter issue 13
November 2013

Introduction

Welcome to the November 2013 issue of the Vicmap Topographic Mapping Newsletter! The aim of this newsletter is to provide users with the latest news on Victorian topographic mapping products.

The objective of the Vicmap topographic mapping program is to provide *current* and *authoritative* topographic mapping for all users, in a number of different scales and map sizes, and in both digital and hardcopy formats.

Information Services Division (ISD) of the Department of Environment and Primary Industries (DEPI) is responsible for the production and maintenance of Vicmap Topographic Mapping.

Products

Vicmap Topographic Mapping is a suite of state wide map products:

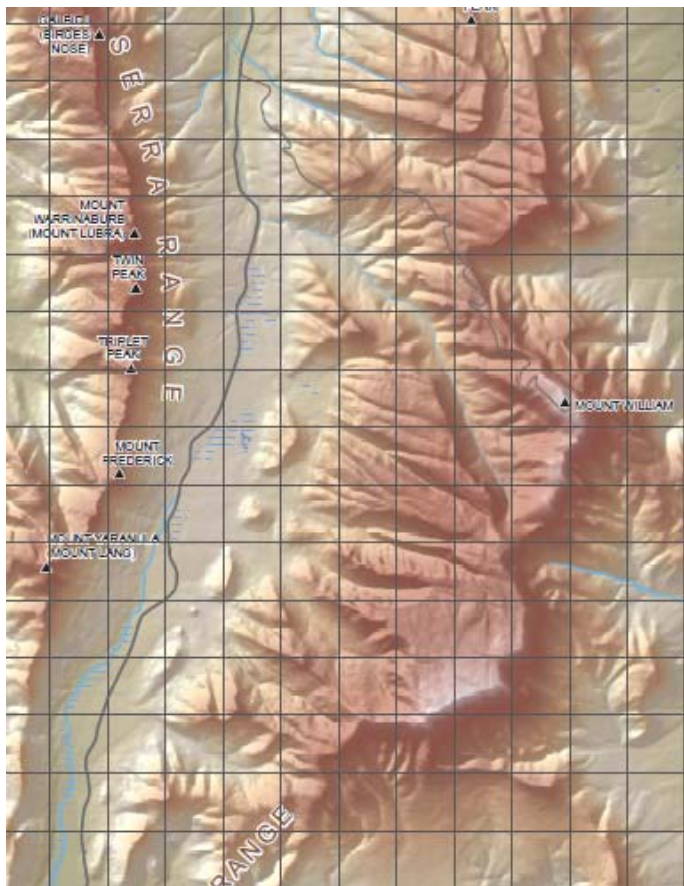
Product/Scale	Size	Digital format/ Hardcopy	Update Cycle	Latest Edition
Vicmap Topographic 1:25 000	A0	Georef Digital Pdf	Yearly	2012
Vicmap Topographic 1:50 000	A0	Georef Digital Pdf	Yearly	2013
Vicmap Topographic 1:100 000	A0	Digital Pdf	Yearly	2012
Vicmap Topographic Maps Online 1:30 000	A4	Georef Digital Pdf	Yearly	2013
	A3			2012
Vicmap Hardcopy Mapping Program. 1:50 000 state wide 1:25 000 - selected areas 1:100 000 - selected areas	A0	Hardcopy	Three to six years for every map sheet	2007-2013
Vicmap Topographic 1:25 000 GeoRef	n.a.	Digital jpg	Yearly	2012
Vicmap Topographic 1:50 000 GeoRef	n.a.	Digital jpg	Yearly	2013
Vicmap Topographic 1:100 000 GeoRef	n.a.	Digital jpg	Yearly	2012

What's new

Vicmap Hardcopy Maps – Revision Program

With state wide coverage at 1:50 000 completed, map sheets are now being updated to ensure that they are no more than six years old. Over 250 map sheets (or 85% of total maps published) have been revised since statewide completion in August 2009. Between July 2013 and October 2013 the following map sheets were published:

Map Sheet Name	Map Sheet Number	Scale	Edition No
Beulah	7326-S	1:50 000	3
Beulah	7326-S	1:50 000	1
Bright Sth	8224-1-S	1:25 000	3
Brim	7325-N	1:50 000	1
Broadmeadows Nth	7822-1-N	1:25 000	1
Broadmeadows Sth	7822-1-S	1:25 000	1
Costerfield Nth	7824-2-N	1:25 000	1
Costerfield Sth	7824-2-S	1:25 000	1
Creswick Sth	7623-2-S	1:25 000	1
Frankston Nth	7921-4-N	1:25 000	1
Frankston Sth	7921-4-S	1:25 000	1
Grampians	7323-N	1:50 000	4
Grampians Nth	7323-1-N	1:25 000	1
Gunbower Nth	7726-2-N	1:25 000	1
Linton Sth	7622-4-S	1:25 000	1
Mitta Mitta Sth	8324-1-S	1:25 000	1
Phillip Island	Special	1:25 000	2
Rosedale South	8221-1-S	1:25 000	2
Tali Karng	Special	1:25 000	2
Thackeray	7323-S	1:50 000	4
Trentham South	7723-2-S	1:25 000	1
Wangaratta	8125-S	1:50 000	3
Watchem	7425-N	1:50 000	3



New Hardcopy Maps – Grampians and Thackeray 1:50 000

The Fourth Edition of the Grampians and Thackeray 1:50 000 maps are now available. These hardcopy maps contain the latest walking tracks, campsites and features of interest over the majority of the Grampians National Park. On the reverse side of these maps is an elevation map and an imagery map of the entire Grampians National Park at 1:100 000.

For more information refer to:

<http://www.dse.vic.gov.au/vicmap> > Vicmap Maps > Vicmap Topographic Hardcopy Maps

Published by the Victorian Government
Department of Environment and Primary Industries, Melbourne, July, 2013

© The State of Victoria Department of Environment and Primary Industries 2013
This publication is copyright. No part may be reproduced by any process except in accordance with the provisions of the Copyright Act 1968.

Authorised by the Victorian Government, 8 Nicholson Street, East Melbourne

For more information contact the DSE Customer Service Centre 136 186

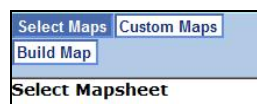
Disclaimer





This publication may be of assistance to you but the State of Victoria and its employees do not guarantee that the publication is without flaw of any kind

How to access, select and purchase Vicmap Topographic Maps Online

METHOD 1 – Select Maps

This method selects and accesses pre created A3 landscape and A4 portrait map sheets



- (1) Go to the <http://www.dse.vic.gov.au/vicmap>
- (2) Navigate to **Vicmap Maps > Vicmap Maps Online** (second from the bottom on the centre panel)
- (3) Click on '**Start an Order**'.
- (4) Search by selecting a known starting location or park or known Mapsheet number & click '**Show Index Map**'
- (5) Select your area of interest by using either  or  icons. If the area of interest over runs two maps, use  to identify the adjoining mapsheets.
- (6) Click on  to view and label the map sheet number
- (7) Once your map sheets have been selected and saved, enter your name and save page, & proceed to payment
- (8) Be sure to enter all details correctly and keep a record of your Order number
- (9) Click on '**Get Order**' to retrieve maps in pdf format
- (10) Use the '**Hints**' button if you require help viewing the pdf. It is important that you download and save the maps before exiting the window.

or is wholly appropriate for your particular purposes and therefore disclaims all liability for any error, loss or other consequence which may arise from you relying on any information in this publication.

Accessibility

If you would like to receive this publication in an accessible format, such as large print or audio, please telephone 136 186, or email customer.service@depi.vic.gov.au

Deaf, hearing impaired or speech impaired? Call us via the National Relay Service on 133 677 or visit www.relayservice.com.au

This document is also available in PDF format on the internet at www.depi.vic.gov.au

METHOD 2 – Custom Maps

This method creates and accesses customized A3 and A4 maps



- (1) Follow Steps (1), (2), (3) and (4) as above in Method 1
- (2) With a customised map, you are able to select the size of the map. You can choose between
 - A4 Landscape
 - A4 Portrait
 - A3 Portrait
 - A3 Landscape
 - A0 Landscape

Note: The maps are defaulted to A4 Portrait in Method 1
- (3) If a mistake has been made, click on the '**clear**' to reset and restart the selection process
- (4) Proceed to Step (5) from Method 1
- (5) Have fun with your maps

App for Reading Georeferenced Vicmap Topographic Maps



An exciting new development in topographic mapping is the arrival of an app for reading and interacting with georeferenced PDFs. Available for both Apple iOS and Android devices.

This free app, Avenza **PDF Maps**, will enable the user to interact with Vicmap Topographic 1:25 000, 1:50 000 and 1:30 000 A4 & A3 map series.

Functionality includes:

- View your location on the PDF map using the built-in GPS device

- View the coordinates of the current position and any waypoint (latitude and longitude)
- Plot waypoints, position and label names, enter attribute data and notes
- Export waypoints and associated attribute data to CSV, GPX or KML
- Quickly view, zoom and pan maps using gestures (pinch, drag and flick, double tap)
- Measure distance and area in map units

How To:

- Download the free app from <http://www.avenza.com/pdf-maps>
- Access the required Vicmap Topographic Map PDFs
- Transfer the maps to your device
- View/Read the maps using the PDF Maps app.

For More Information

For access to information on **Vicmap Hardcopy Topographic Mapping** visit website:

<http://www.dse.vic.gov.au/vicmap> > Vicmap Maps > Vicmap Topographic Hardcopy Maps

For access to the following map series PDFs

- **Vicmap Topographic 1:30 000 Online**
- **Vicmap Topographic 1:100 000**
- **Vicmap Topographic 1:50 000**
- **Vicmap Topographic 1:25 000**

Visit the website

<http://inform> > maps > Vicmap Topographic Maps

For access to the following map imagery

- **Vicmap Topographic 1:25 000 GeoReferenced**
- **Vicmap Topographic 1:50 000 GeoReferenced**
- **Vicmap Topographic 1:100 000 GeoReferenced**

use via: DSE's Image Web Server

Published by the Victorian Government
Department of Environment and Primary Industries, Melbourne, July, 2013

© The State of Victoria Department of Environment and Primary Industries 2013
This publication is copyright. No part may be reproduced by any process except in accordance with the provisions of the Copyright Act 1968.

Authorised by the Victorian Government, 8 Nicholson Street, East Melbourne

For more information contact the DSE Customer Service Centre 136 186

Disclaimer

This publication may be of assistance to you but the State of Victoria and its employees do not guarantee that the publication is without flaw of any kind

or is wholly appropriate for your particular purposes and therefore disclaims all liability for any error, loss or other consequence which may arise from you relying on any information in this publication.

Accessibility

If you would like to receive this publication in an accessible format, such as large print or audio, please telephone 136 186, or email customer.service@depi.vic.gov.au

Deaf, hearing impaired or speech impaired? Call us via the National Relay Service on 133 677 or visit www.relayservice.com.au

This document is also available in PDF format on the internet at www.depi.vic.gov.au