

# Planning Property Report

from [www.planning.vic.gov.au](http://www.planning.vic.gov.au) on 21 October 2020 09:52 AM

**Lot and Plan Number:** Lot D PS826794

**Address:** TYERS ROAD TRARALGON 3844

**Local Government (Council):** LATROBE **Council Property Number:** 58872

**Directory Reference:** VicRoads 696 B2

See next page for planning information

**Copyright © - State Government of Victoria**

**Disclaimer:** This content is provided for information purposes only. No claim is made as to the accuracy or authenticity of the content. The Victorian Government does not accept any liability to any person for the information provided.

Read the full disclaimer at [www.land.vic.gov.au/home/copyright-and-disclaimer](http://www.land.vic.gov.au/home/copyright-and-disclaimer)

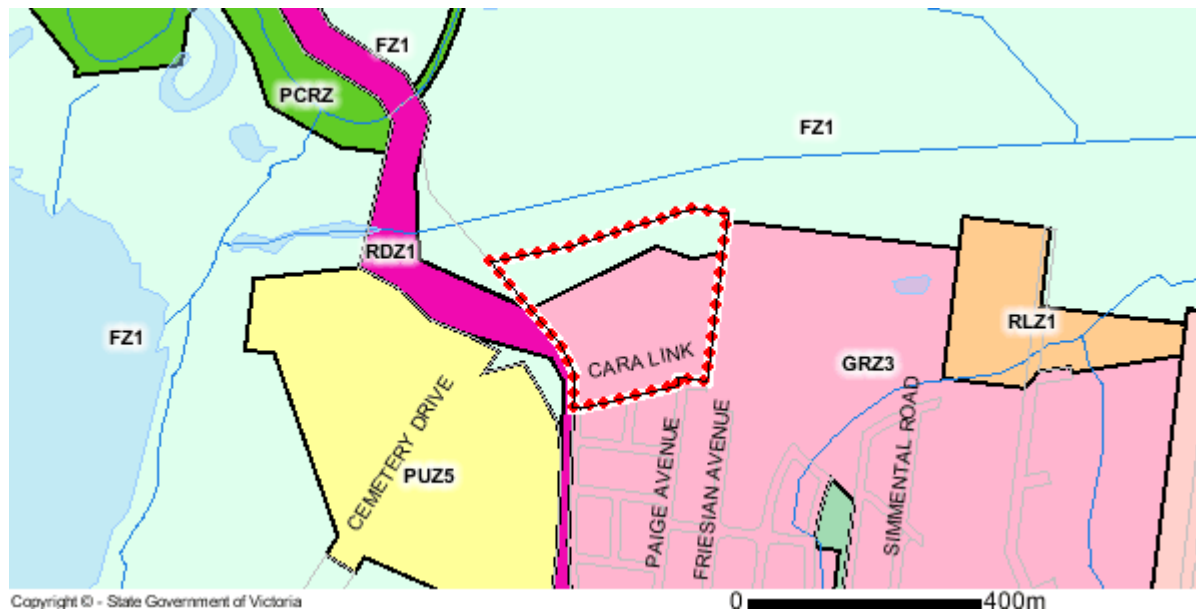
## Planning Zones

[FARMING ZONE \(FZ\)](#)

[FARMING ZONE - SCHEDULE 1 \(FZ1\)](#)

[GENERAL RESIDENTIAL ZONE \(GRZ\)](#)

[GENERAL RESIDENTIAL ZONE - SCHEDULE 3 \(GRZ3\)](#)



Note: labels for zones may appear outside the actual zone - please compare the labels with the legend.

### Zones Legend

ACZ - Activity Centre	IN1Z - Industrial 1	R1Z - General Residential
B1Z - Commercial 1	IN2Z - Industrial 2	R2Z - General Residential
B2Z - Commercial 1	IN3Z - Industrial 3	R3Z - General Residential
B3Z - Commercial 2	LDRZ - Low Density Residential	RAZ - Rural Activity
B4Z - Commercial 2	MUZ - Mixed Use	RCZ - Rural Conservation
B5Z - Commercial 1	NRZ - Neighbourhood Residential	RDZ1 - Road - Category 1
C1Z - Commercial 1	PCRZ - Public Conservation & Resource	RDZ2 - Road - Category 2
C2Z - Commercial 2	PDZ - Priority Development	RGZ - Residential Growth
CA - Commonwealth Land	PPRZ - Public Park & Recreation	RLZ - Rural Living
CCZ - Capital City	PUZ1 - Public Use - Service & Utility	RUZ - Rural
CDZ - Comprehensive Development	PUZ2 - Public Use - Education	SUZ - Special Use
DZ - Dockland	PUZ3 - Public Use - Health Community	TZ - Township
ERZ - Environmental Rural	PUZ4 - Public Use - Transport	UFZ - Urban Floodway
FZ - Farming	PUZ5 - Public Use - Cemetery/Crematorium	UGZ - Urban Growth
GRZ - General Residential	PUZ6 - Public Use - Local Government	Urban Growth Boundary
GWAZ - Green Wedge A	PUZ7 - Public Use - Other Public Use	
GWZ - Green Wedge	PZ - Port	
Railway	Tram	River, stream
		Lake, waterbody

Copyright © - State Government of Victoria

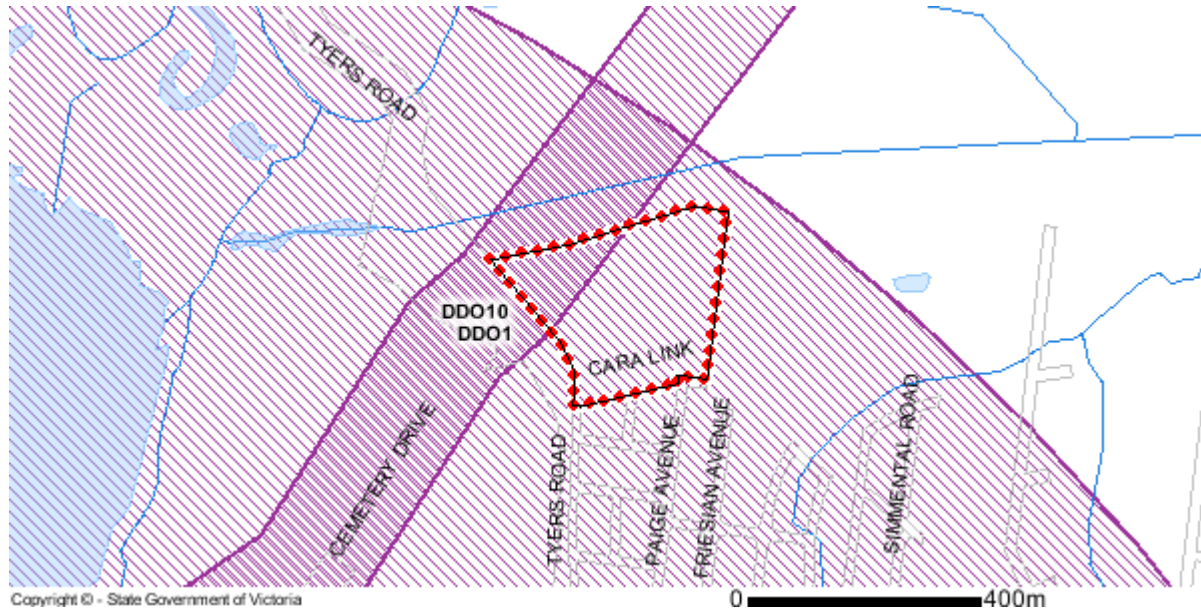
**Disclaimer:** This content is provided for information purposes only. No claim is made as to the accuracy or authenticity of the content. The Victorian Government does not accept any liability to any person for the information provided. Read the full disclaimer at [www.land.vic.gov.au/home/copyright-and-disclaimer](http://www.land.vic.gov.au/home/copyright-and-disclaimer)

## Planning Overlays

DESIGN AND DEVELOPMENT OVERLAY (DDO)

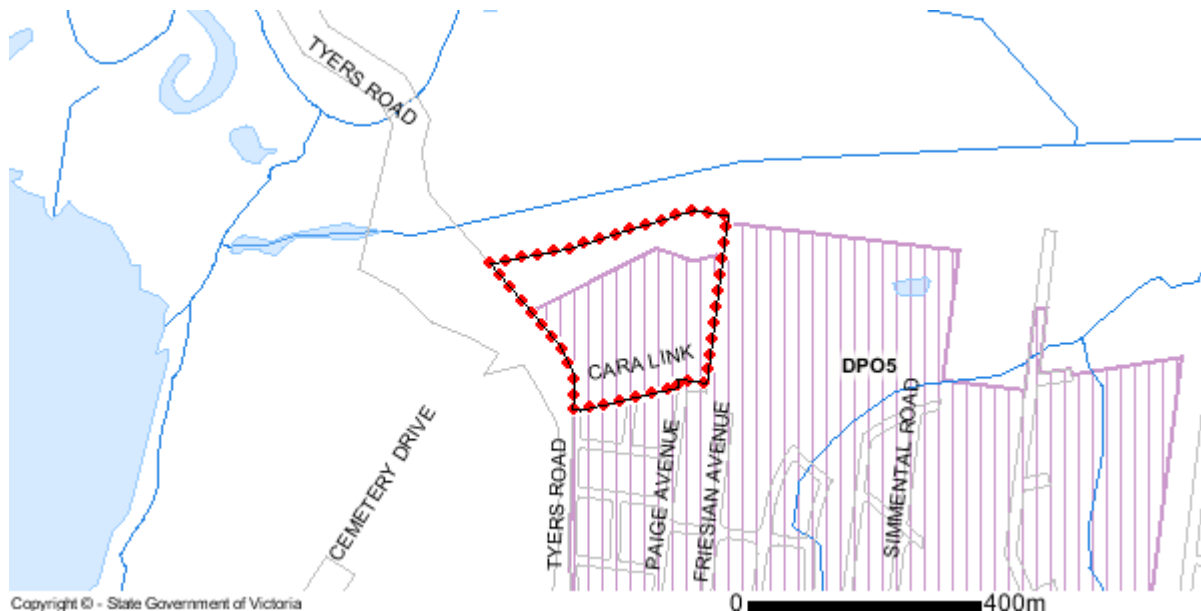
DESIGN AND DEVELOPMENT OVERLAY - SCHEDULE 1 (DDO1)

DESIGN AND DEVELOPMENT OVERLAY - SCHEDULE 10 (DDO10)



DEVELOPMENT PLAN OVERLAY (DPO)

DEVELOPMENT PLAN OVERLAY - SCHEDULE 5 (DPO5)



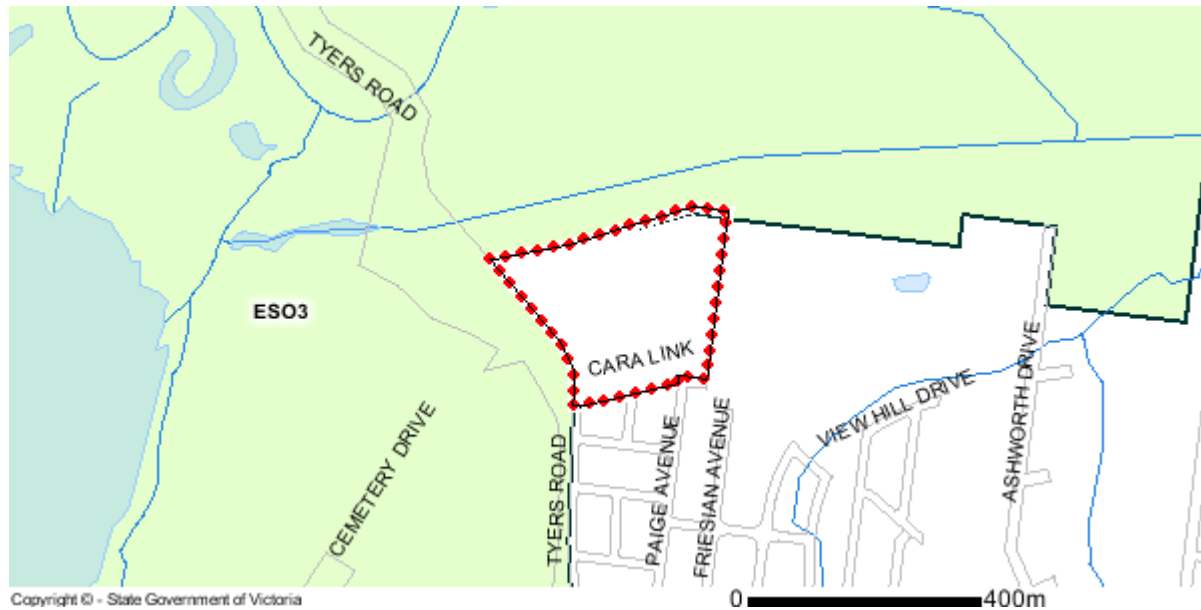
Copyright © - State Government of Victoria

**Disclaimer:** This content is provided for information purposes only. No claim is made as to the accuracy or authenticity of the content. The Victorian Government does not accept any liability to any person for the information provided. Read the full disclaimer at [www.land.vic.gov.au/home/copyright-and-disclaimer](http://www.land.vic.gov.au/home/copyright-and-disclaimer)

## Planning Overlays

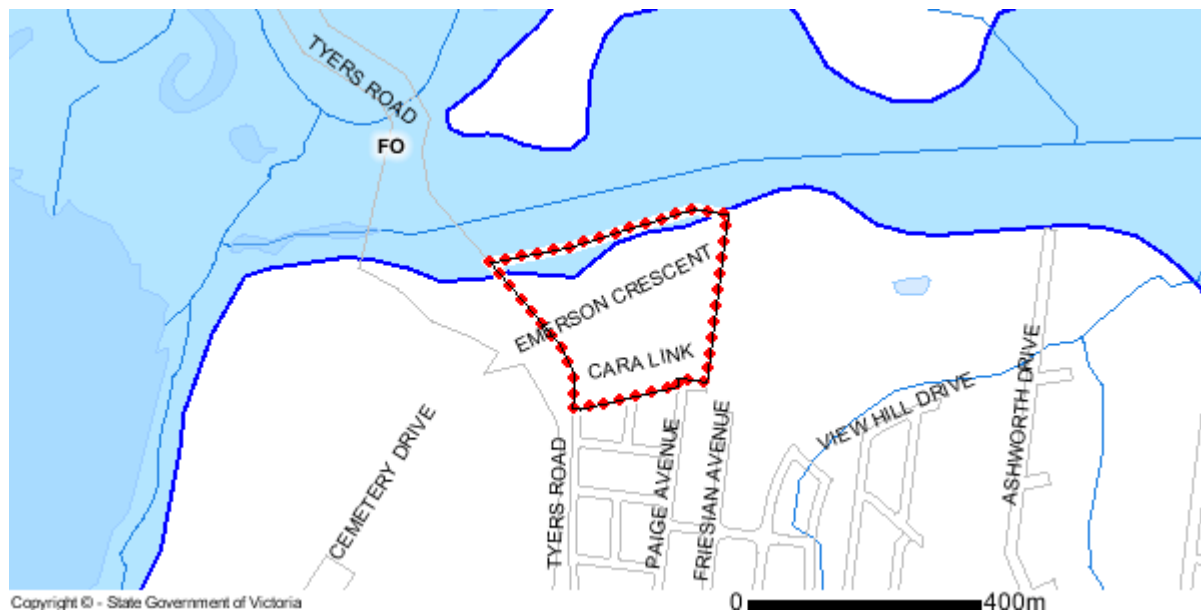
ENVIRONMENTAL SIGNIFICANCE OVERLAY (ESO)

ENVIRONMENTAL SIGNIFICANCE OVERLAY - SCHEDULE 3 (ESO3)



FLOODWAY OVERLAY (FO)

FLOODWAY OVERLAY SCHEDULE (FO)



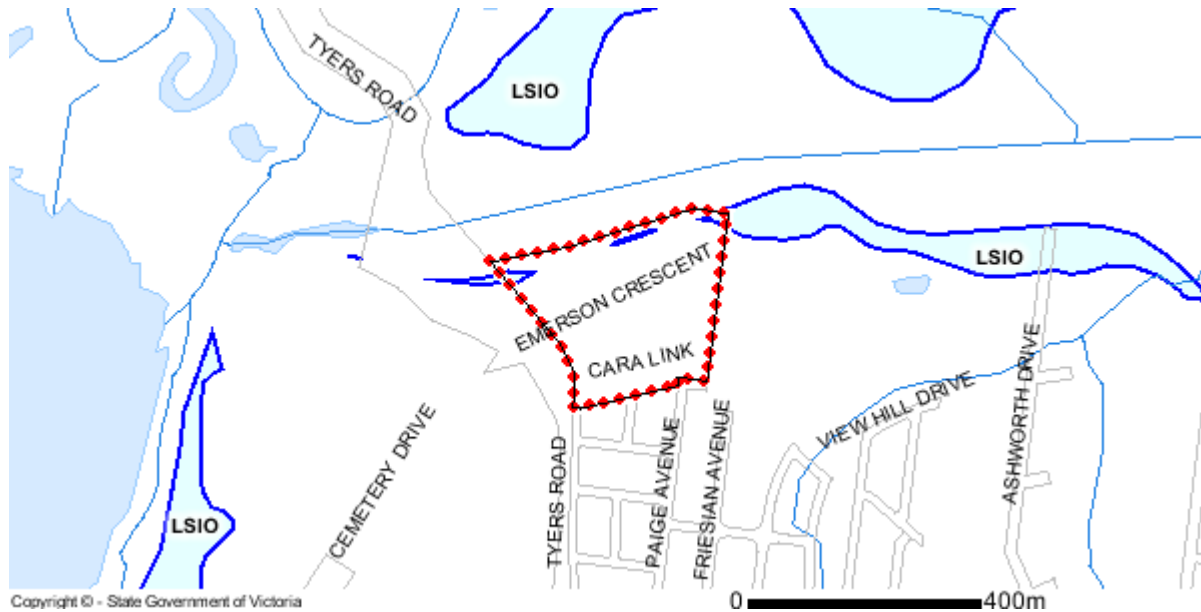
Copyright © - State Government of Victoria

**Disclaimer:** This content is provided for information purposes only. No claim is made as to the accuracy or authenticity of the content. The Victorian Government does not accept any liability to any person for the information provided. Read the full disclaimer at [www.land.vic.gov.au/home/copyright-and-disclaimer](http://www.land.vic.gov.au/home/copyright-and-disclaimer)

## Planning Overlays

LAND SUBJECT TO INUNDATION OVERLAY (LSIO)

LAND SUBJECT TO INUNDATION OVERLAY SCHEDULE (LSIO)

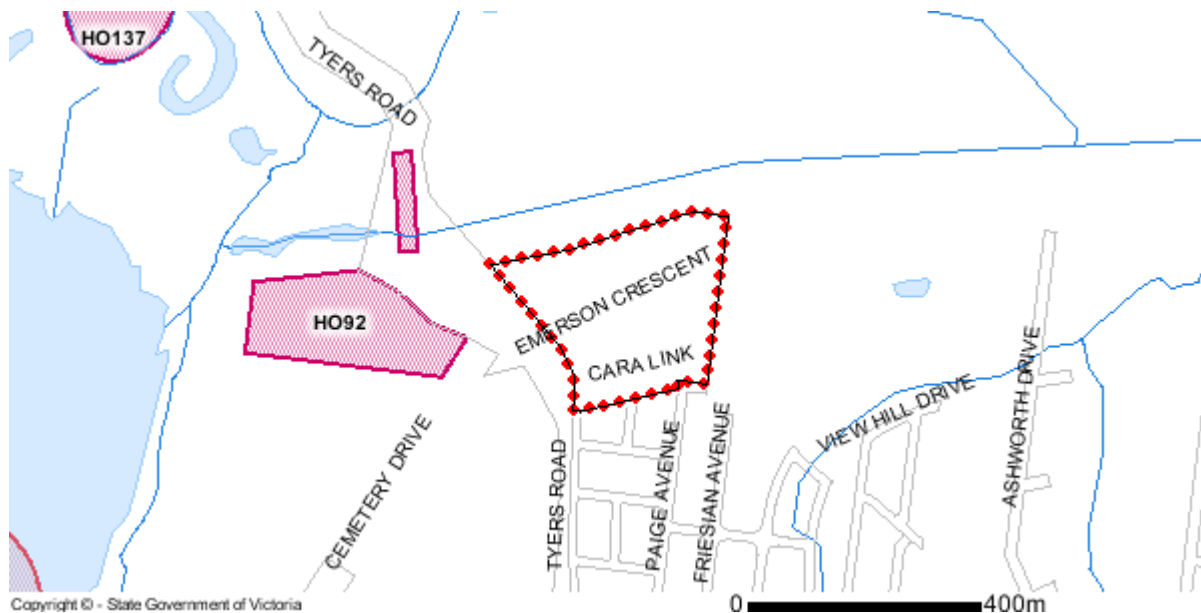


### OTHER OVERLAYS

Other overlays in the vicinity not directly affecting this land

BUSHFIRE MANAGEMENT OVERLAY (BMO)

HERITAGE OVERLAY (HO)



Copyright © - State Government of Victoria

**Disclaimer:** This content is provided for information purposes only. No claim is made as to the accuracy or authenticity of the content. The Victorian Government does not accept any liability to any person for the information provided. Read the full disclaimer at [www.land.vic.gov.au/home/copyright-and-disclaimer](http://www.land.vic.gov.au/home/copyright-and-disclaimer)

## Planning Overlays Legend

### Overlays Legend

	AEO - Airport Environs		IPO - Incorporated Plan
	BMO - Bushfire Management		LSIO - Land Subject to Inundation
	CLPO - City Link Project		MAEO1 - Melbourne Airport Environs 1
	DCPO - Development Contributions Plan		MAEO2 - Melbourne Airport Environs 2
	DDO - Design & Development		NCO - Neighbourhood Character
	DDOPT - Design & Development Part		PD - Parking
	DPO - Development Plan		PAO - Public Acquisition
	EAO - Environmental Audit		RO - Restructure
	EMO - Erosion Management		RCO - Road Closure
	ESO - Environmental Significance		SBO - Special Building
	FO - Floodway		SLO - Significant Landscape
	HO - Heritage		SMD - Salinity Management
	ICPO - Infrastructure Contributions Plan		SRD - State Resource
			VPO - Vegetation Protection
	Railway		Tram
	River, stream		Lake, waterbody

Note: due to overlaps some colours on the maps may not match those in the legend.

## Further Planning Information

Planning scheme data last updated on 14 October 2020.

A **planning scheme** sets out policies and requirements for the use, development and protection of land.

This report provides information about the zone and overlay provisions that apply to the selected land.

Information about the State and local policy, particular, general and operational provisions of the local planning scheme that may affect the use of this land can be obtained by contacting the local council or by visiting [Planning Schemes Online](#)

This report is NOT a **Planning Certificate** issued pursuant to Section 199 of the *Planning and Environment Act 1987*.

It does not include information about exhibited planning scheme amendments, or zonings that may affect the land.

To obtain a Planning Certificate go to [Titles and Property Certificates](#)

For details of surrounding properties, use this service to get the Reports for properties of interest

To view planning zones, overlay and heritage information in an interactive format visit [Planning Maps Online](#)

For other information about planning in Victoria visit [www.planning.vic.gov.au](http://www.planning.vic.gov.au)

### Copyright © - State Government of Victoria

**Disclaimer:** This content is provided for information purposes only. No claim is made as to the accuracy or authenticity of the content. The Victorian Government does not accept any liability to any person for the information provided.

Read the full disclaimer at [www.land.vic.gov.au/home/copyright-and-disclaimer](http://www.land.vic.gov.au/home/copyright-and-disclaimer)