

Planning Property Report

from www.planning.vic.gov.au on 21 October 2020 10:39 AM

Lot and Plan Number: Lot 6 LP66670

Address: 46 TIVENDALE ROAD OFFICER 3809

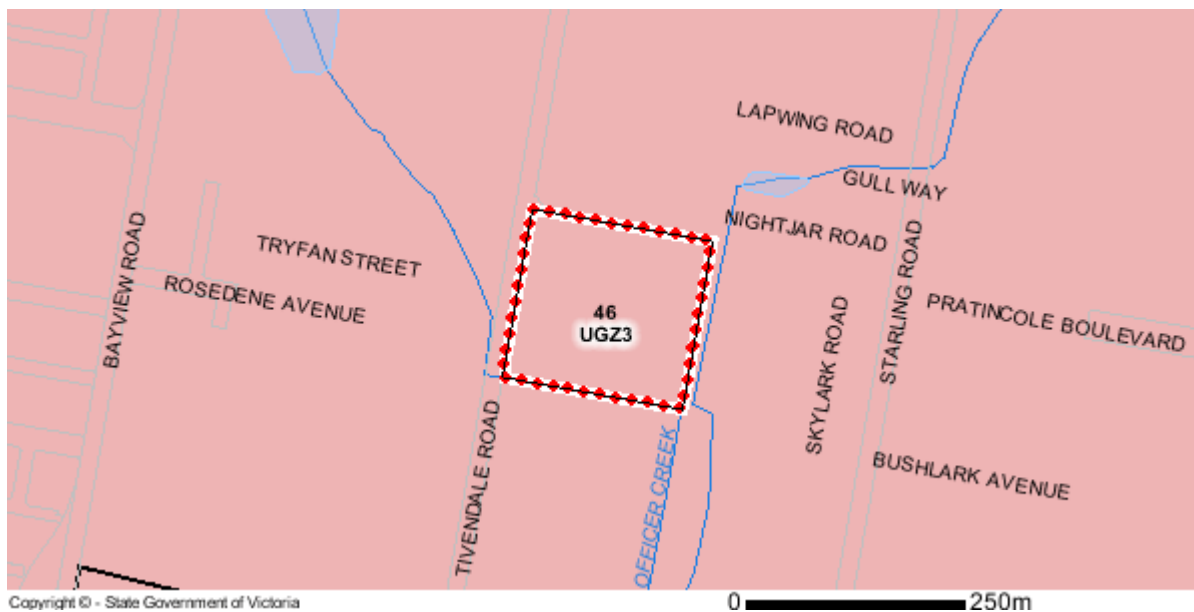
Local Government (Council): CARDINIA **Council Property Number:** 1855950900

Directory Reference: Melway 214 J2

Planning Zone

URBAN GROWTH ZONE (UGZ)

URBAN GROWTH ZONE - SCHEDULE 3 (UGZ3)



Copyright © - State Government of Victoria

0 250m

Note: labels for zones may appear outside the actual zone - please compare the labels with the legend.

Zones Legend

ACZ - Activity Centre	IN1Z - Industrial 1	R1Z - General Residential
B1Z - Commercial 1	IN2Z - Industrial 2	R2Z - General Residential
B2Z - Commercial 1	IN3Z - Industrial 3	R3Z - General Residential
B3Z - Commercial 2	LDRZ - Low Density Residential	RAZ - Rural Activity
B4Z - Commercial 2	MUZ - Mixed Use	RCZ - Rural Conservation
B5Z - Commercial 1	NRZ - Neighbourhood Residential	RDZ1 - Road - Category 1
C1Z - Commercial 1	PCRZ - Public Conservation & Resource	RDZ2 - Road - Category 2
C2Z - Commercial 2	PDZ - Priority Development	RGZ - Residential Growth
CA - Commonwealth Land	PPRZ - Public Park & Recreation	RLZ - Rural Living
CCZ - Capital City	PUZ1 - Public Use - Service & Utility	RUZ - Rural
CDZ - Comprehensive Development	PUZ2 - Public Use - Education	SUZ - Special Use
DZ - Dockland	PUZ3 - Public Use - Health Community	TZ - Township
ERZ - Environmental Rural	PUZ4 - Public Use - Transport	UFZ - Urban Floodway
FZ - Farming	PUZ5 - Public Use - Cemetery/Crematorium	UGZ - Urban Growth
GRZ - General Residential	PUZ6 - Public Use - Local Government	Urban Growth Boundary
GWAZ - Green Wedge A	PUZ7 - Public Use - Other Public Use	
GWZ - Green Wedge	PZ - Port	
Railway	Tram	River, stream
		Lake, waterbody

Copyright © - State Government of Victoria

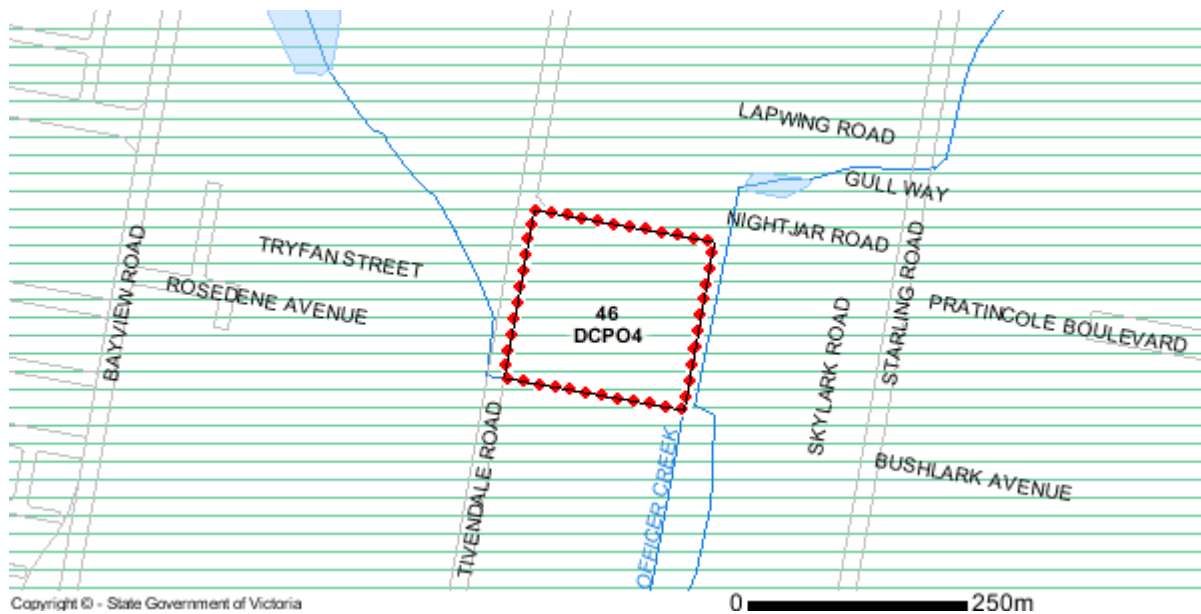
Disclaimer: This content is provided for information purposes only. No claim is made as to the accuracy or authenticity of the content. The Victorian Government does not accept any liability to any person for the information provided.

Read the full disclaimer at www.land.vic.gov.au/home/copyright-and-disclaimer

Planning Overlays

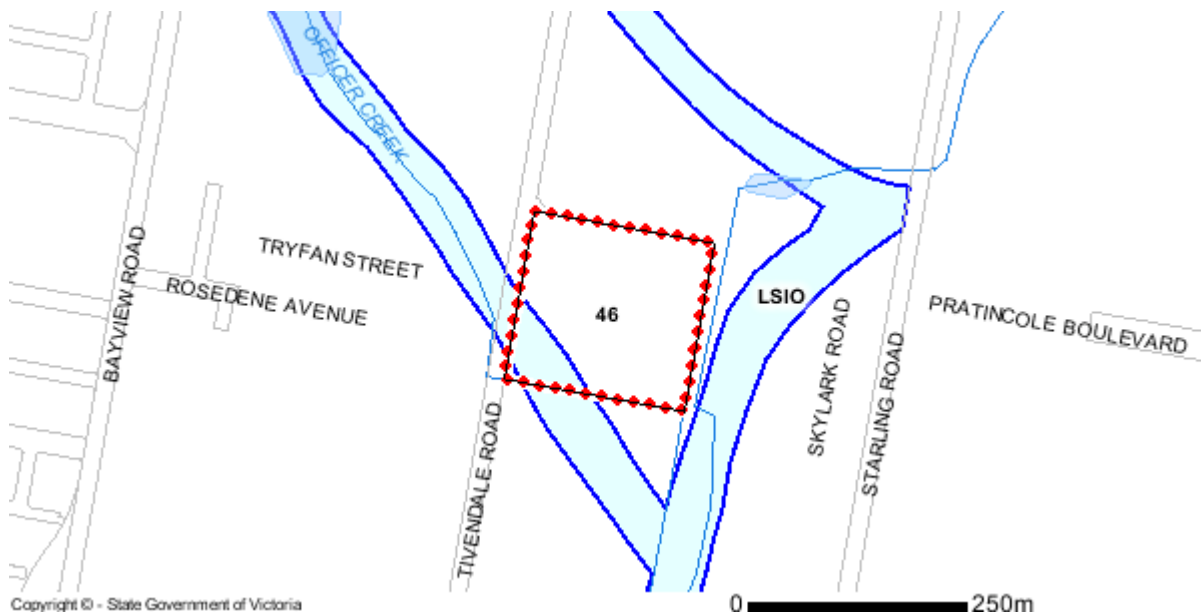
DEVELOPMENT CONTRIBUTIONS PLAN OVERLAY (DCPO)

DEVELOPMENT CONTRIBUTIONS PLAN OVERLAY - SCHEDULE 4 (DCPO4)



LAND SUBJECT TO INUNDATION OVERLAY (LSIO)

LAND SUBJECT TO INUNDATION OVERLAY SCHEDULE (LSIO)



Copyright © - State Government of Victoria

Disclaimer: This content is provided for information purposes only. No claim is made as to the accuracy or authenticity of the content. The Victorian Government does not accept any liability to any person for the information provided. Read the full disclaimer at www.land.vic.gov.au/home/copyright-and-disclaimer

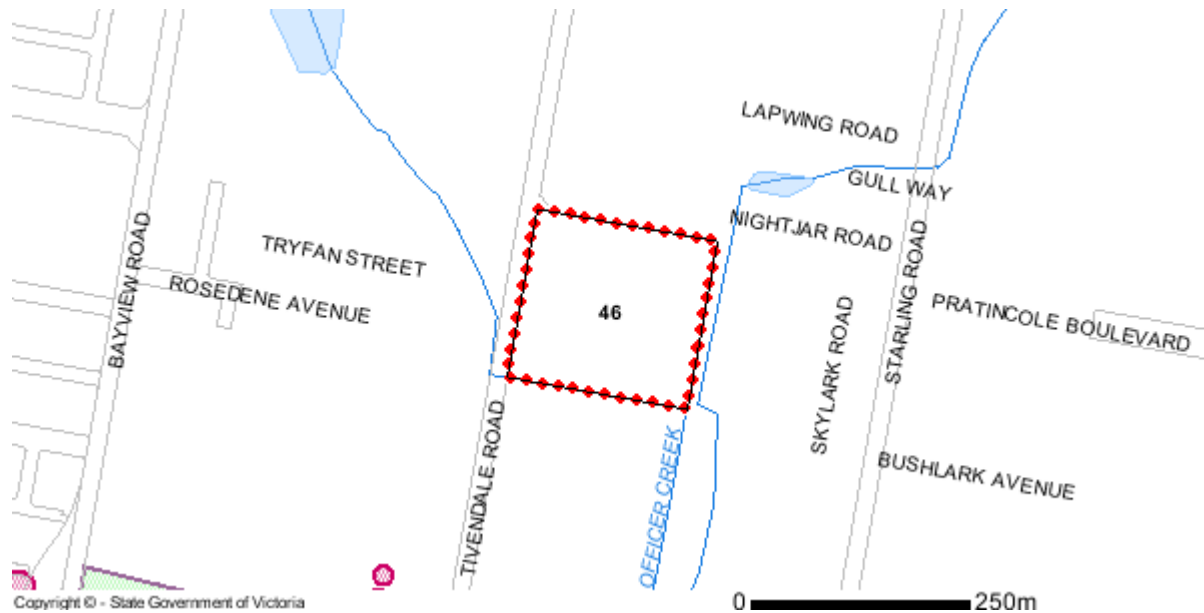
Planning Overlays

OTHER OVERLAYS

Other overlays in the vicinity not directly affecting this land

[HERITAGE OVERLAY \(HO\)](#)

[PARKING OVERLAY \(PO\)](#)



Overlays Legend

AEO - Airport Environs	IPO - Incorporated Plan
BMO - Bushfire Management	LSIO - Land Subject to Inundation
CLPO - City Link Project	MAEO1 - Melbourne Airport Environs 1
DCPO - Development Contributions Plan	MAEO2 - Melbourne Airport Environs 2
DDO - Design & Development	NCO - Neighbourhood Character
DDOPT - Design & Development Part	PO - Parking
DPO - Development Plan	PAO - Public Acquisition
EAO - Environmental Audit	RO - Restructure
EMO - Erosion Management	RCO - Road Closure
ESO - Environmental Significance	SBO - Special Building
FO - Floodway	SLO - Significant Landscape
HO - Heritage	SMO - Salinity Management
ICPO - Infrastructure Contributions Plan	SRD - State Resource
Railway	VPO - Vegetation Protection
Tram	
River, stream	Lake, waterbody

Note: due to overlaps some colours on the maps may not match those in the legend.

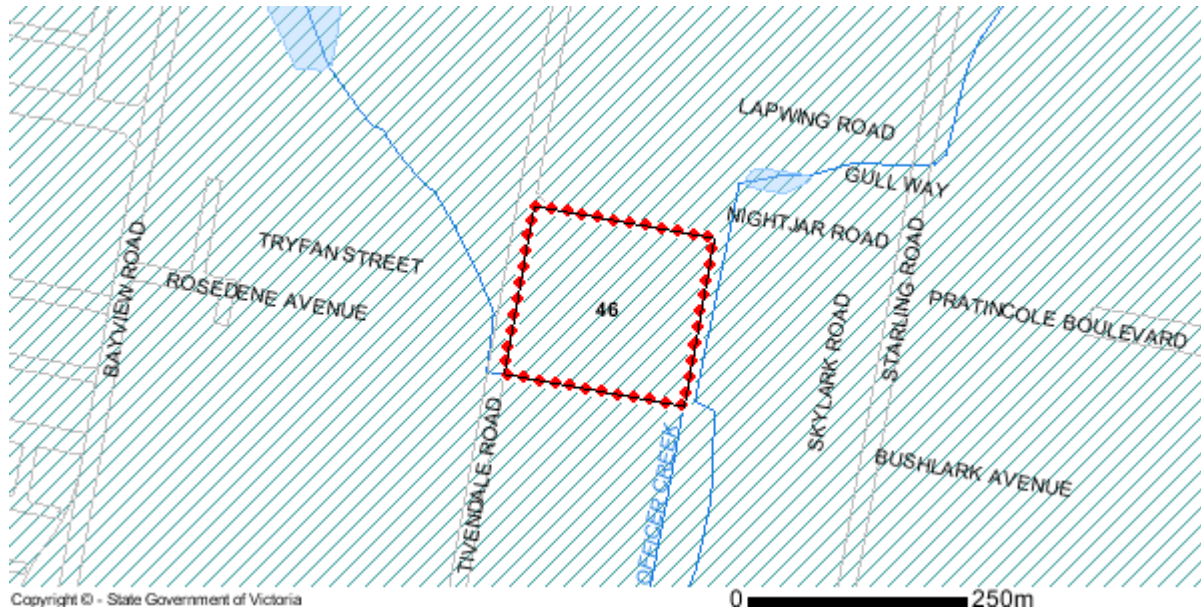
Copyright © - State Government of Victoria

Disclaimer: This content is provided for information purposes only. No claim is made as to the accuracy or authenticity of the content. The Victorian Government does not accept any liability to any person for the information provided.

Read the full disclaimer at www.land.vic.gov.au/home/copyright-and-disclaimer

Melbourne Strategic Assessment

The property may be located within the Melbourne Strategic Assessment program area. Actions associated with urban development are subject to requirements of the Commonwealth Environment Protection and Biodiversity Conservation Act 1999. Follow the link for more details: <https://nvim.delwp.vic.gov.au/BCS>



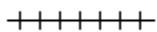
Melbourne Strategic Assessment Area Legend



Melbourne Strategic Assessment Area



Selected land



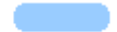
Railway



Tram



River, stream



Lake, waterbody

Further Planning Information

Planning scheme data last updated on 14 October 2020.

A **planning scheme** sets out policies and requirements for the use, development and protection of land.

This report provides information about the zone and overlay provisions that apply to the selected land.

Information about the State and local policy, particular, general and operational provisions of the local planning scheme that may affect the use of this land can be obtained by contacting the local council or by visiting [Planning Schemes Online](#)

This report is NOT a **Planning Certificate** issued pursuant to Section 199 of the *Planning and Environment Act 1987*.

It does not include information about exhibited planning scheme amendments, or zonings that may affect the land.

To obtain a Planning Certificate go to [Titles and Property Certificates](#)

For details of surrounding properties, use this service to get the Reports for properties of interest

To view planning zones, overlay and heritage information in an interactive format visit [Planning Maps Online](#)

For other information about planning in Victoria visit www.planning.vic.gov.au

Copyright © - State Government of Victoria

Disclaimer: This content is provided for information purposes only. No claim is made as to the accuracy or authenticity of the content. The Victorian Government does not accept any liability to any person for the information provided.

Read the full disclaimer at www.land.vic.gov.au/home/copyright-and-disclaimer